

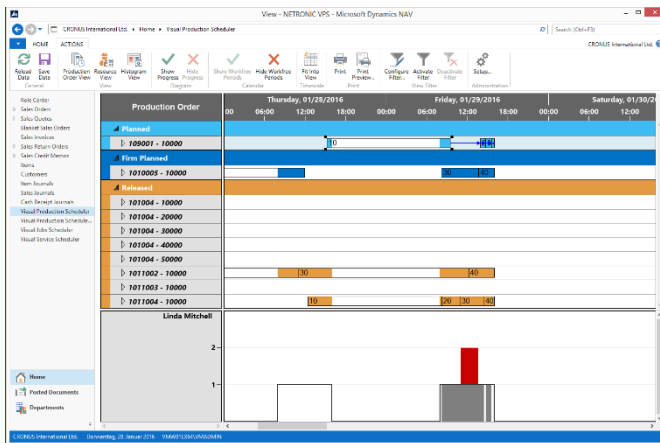
Visual Production Scheduler

Enhanced Production Scheduling for Microsoft Dynamics NAV

The VPS Brings Operational Agility to Dynamics NAV Manufacturing Users

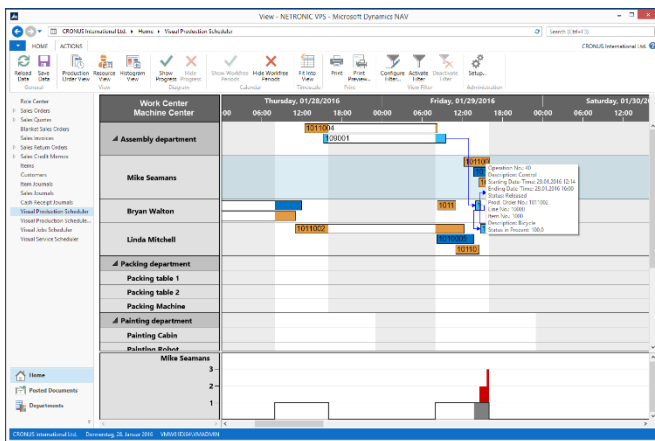
1. Information value: See production orders, production order lines, capacities, capacity utilization, bottlenecks and delivery times at a glance.
2. Decision value: Understand conflicts & dependencies, and take corrective actions with simple drag & drop.
3. Business value: Better resource utilization, stronger delivery time commitments, agile reaction to unplanned changes.

Production Order View



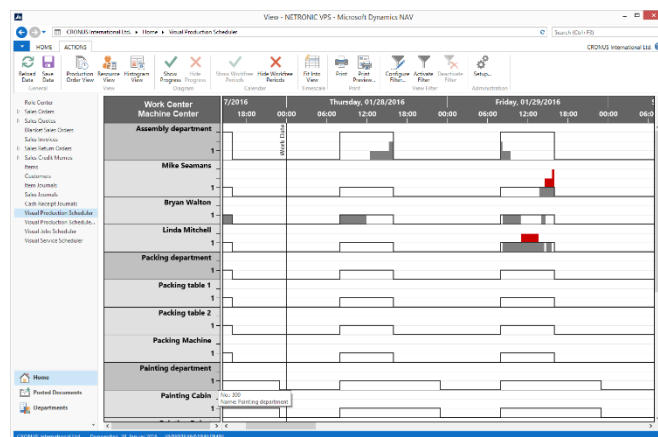
- Data shown by production order status, production number and work/machine center that is responsible for the respective operation.
- Focused on the question: Do I manage to finish my production order in time?
- Also Indicates resource conflicts.
- Allows interactions, i.e. drag and drop of operations and production orders.
- Typical user roles.
 - Production planner.
 - Sales.

Resource View



- Data shown by work and machine centers.
- Focused on the question: Where do I have capacity bottlenecks and which operation do I need to move to change this?
- Also Indicates delivery time conflicts.
- Allows interactions, i.e. drag and drop of operations and production orders.
- Typical user roles.
 - Production planner.

Histogram View

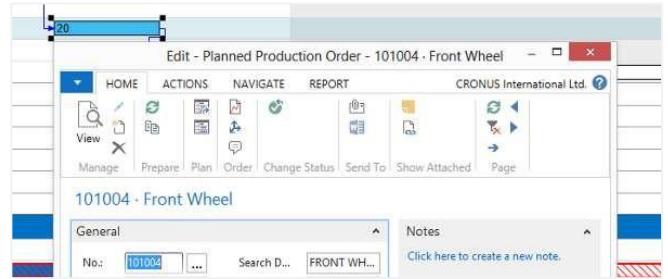


- Data shown by work/ machine centers. Focused on capacity bottlenecks. Provides capacity overview at one glance.
- Interactions not allowed.
- Typical user roles
 - Production supervisor
 - Plant manager
 - Production planner

Selected Features

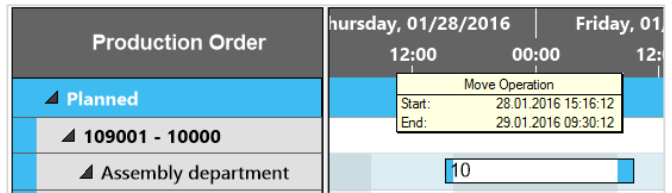
Complete Integration

The Visual Production Scheduler has been completely integrated into Microsoft Dynamics NAV as a page applying the Dynamics NAV .NET Framework Interoperability concept. This integration allows for a seamless collaboration of Microsoft Dynamics NAV and the add-in. Double-clicking on production orders for instance opens the production order card, while double-clicking on a work center correspondingly opens the work center card.



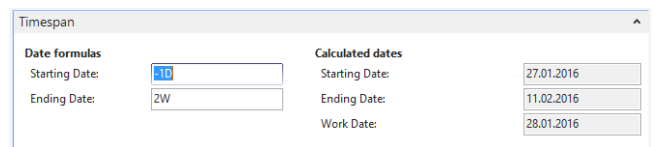
Interactive Visual Scheduling

Move the position of production orders by simple mouse actions – horizontally to modify start and end dates or vertically to modify assignments to different work or machine centers. When moving production orders, you can also recognize the capacities of resources, and non-working periods are visually emphasized in the calendar.



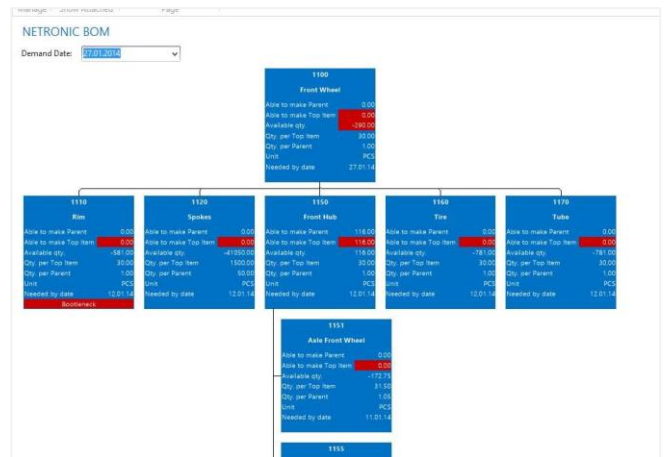
Automatic Scheduling of Successors and Predecessors

When operations being part of a production order are moved, the successors and predecessors can be automatically shifted with them while at the same time the float time is always minimized. This can be done with both sequential and parallel operations.



Visualization of BOM (bill-of-material)

Material availability is an important criteria if you intend starting to work on production orders earlier. The VPS supports this decision by a visual representation of the BOM by production order. Even more: You can simulate various start dates for this production order and immediately see the impact of these changes on the material availability.



Technical Details

- For Microsoft Dynamics NAV as of version 2009 R2
- Based entirely on the .NET framework
- Designed for data from the Manufacturing Module (production orders, production order lines, capacities)
- Real-time integration as Dynamics NAV page
- Interactive planning by drag & drop
- Data-driven visualization
- Comprehensive printing functionality
- Multi-user support
- Based on VARCHART XGantt 5.0
- Comprehensive usage of the so-called "Live Updates" to quickly and intuitively support the planner
- Production order view
- Resource view plus capacity view
- Visualization of bill-of-material (BOM)